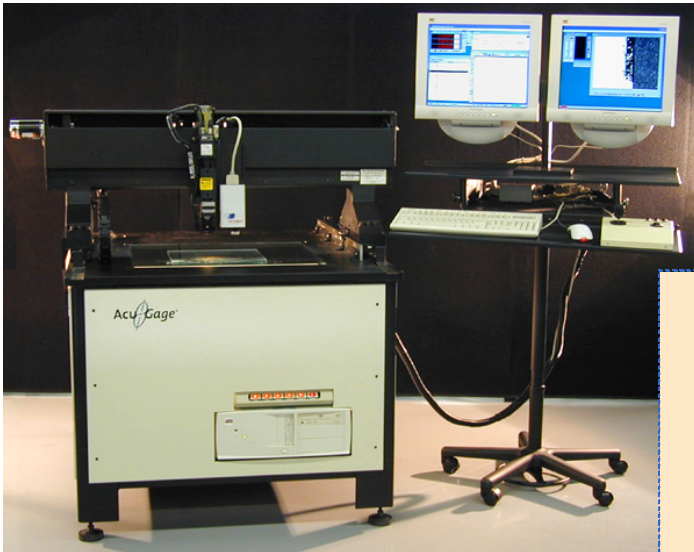




A DIVISION OF OCEAN INDUSTRIES, LLC QUALITY PRODUCTS FOR GROWING BUSINESSES

The ConoVision™ Inspection System

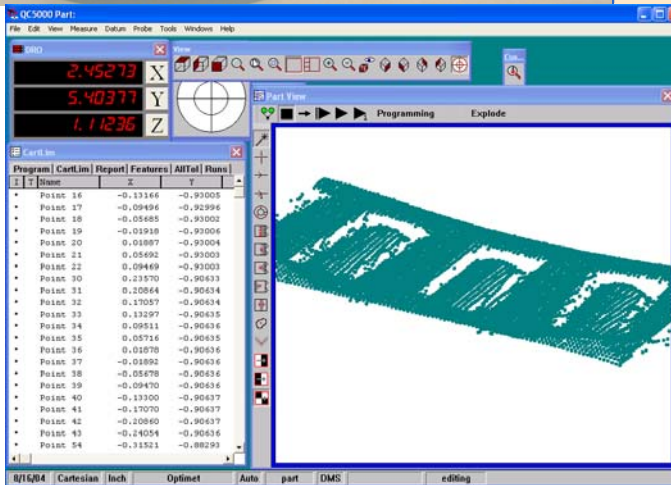
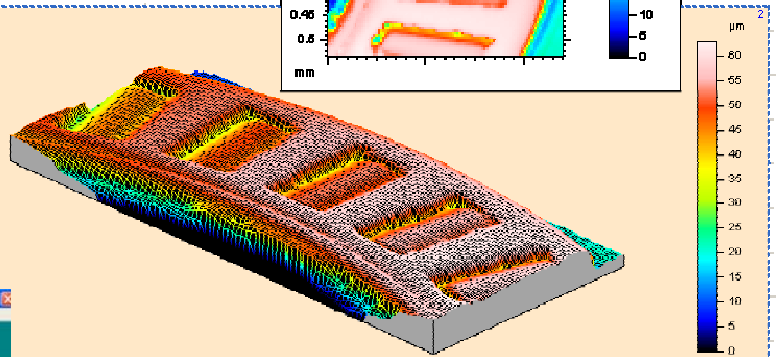
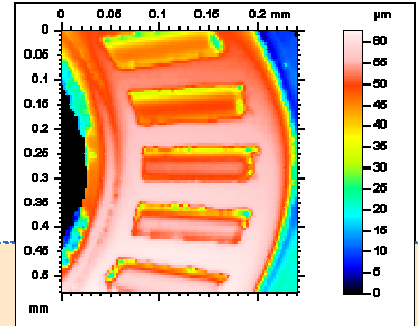
Utilizing Optimet Conoscopic Technology



Left: The ConoVision Inspection System

Right & Below: Scanned data as seen in the Mountains Software

Bottom left: Same data as seen in the QC5000



Video tools for your 2D profiles, laser scanning for hard-to-gage 3D elements like beads on gaskets, teeth on gears, edges on cutting tools, traces on circuit boards, progressive stamped parts and molded plastic parts.

From automotive to aerospace to medical to job shops, Acu-Gage has helped companies grow their businesses.

How can we help you?

Standard Features:

- Quadra-Chek 5300: 3 Axis Windows™-based metrology software
- Optimet non-contact single laser range sensor with one lens
- 0.00004" / 0.0001mm Heidenhain linear encoders
- Black & White Video Edge Detection
- 3 Axis CNC Drives
- Z Axis with AutoFocus
- Programmable top & bottom fiber optic lighting
- Programmable Zoom for programming to different magnifications within a measuring cycle
- Steel table & crossarm with Acu-Gage's proprietary center drive
- Rugged THK slides for all axes

Options:

- Raindrop Geomagic: for producing polygon models
- Mountains: for topography analysis
- Color video edge detection
- Q-Axis rotary stage

Standard Sizes:

- 12" x 12", 24" x 24", 36" x 36" and 36" x 48"
- 300mm x 300mm, 600mm x 600mm, 900mm x 900mm, 900mm x 1200mm
- Z Axis: 6" to 12" in 2 inch increments, 150mm to 300mm in 50mm increments
- Special sizes upon request